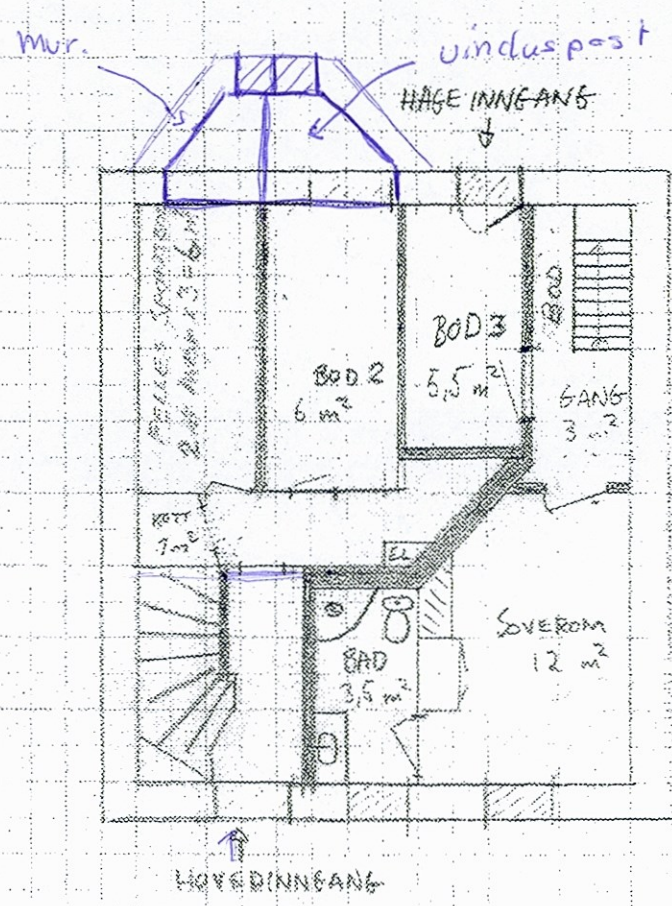


163/533



STEMMEVEIEN
 KJELLER : 18,5 m² BOA
 MÅLESTOKK 1:100
 TAKHØYDE 2,21 m

 BERGEN KOMMUNE
 Sentralarkivet
 Saks nr. 20050524 Dok.nr. 7
 Mottatt 07.12.2005
 Avdeling/kontor: BYGG-BYKUNDE
 Saksbehandler: 655A
 Offentlig: _____
 Arkiv nr: 5210

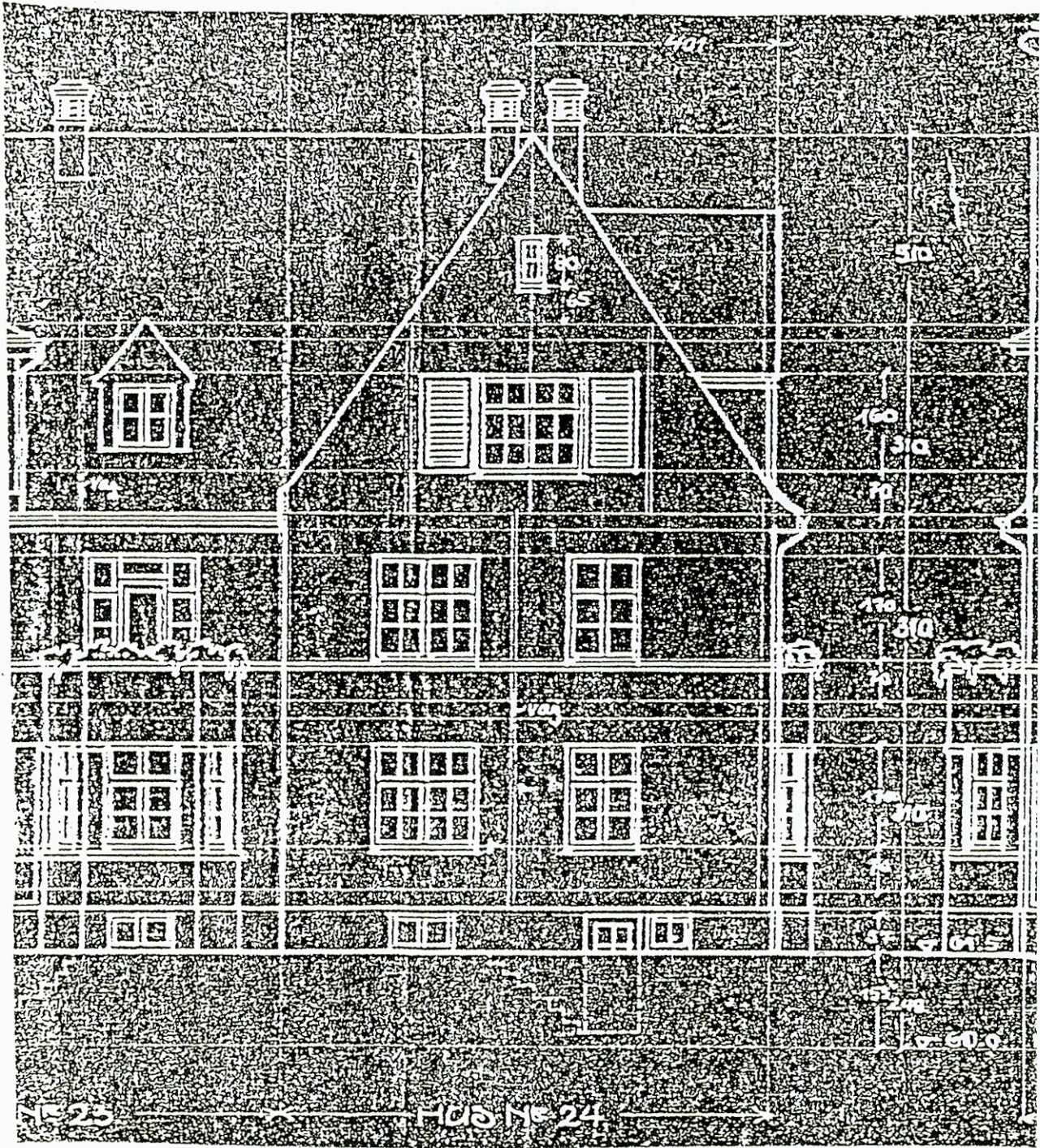
KORRIGERT 1/12-2005 : PAAL ANDRÉ JONHANNESSEN
Paal



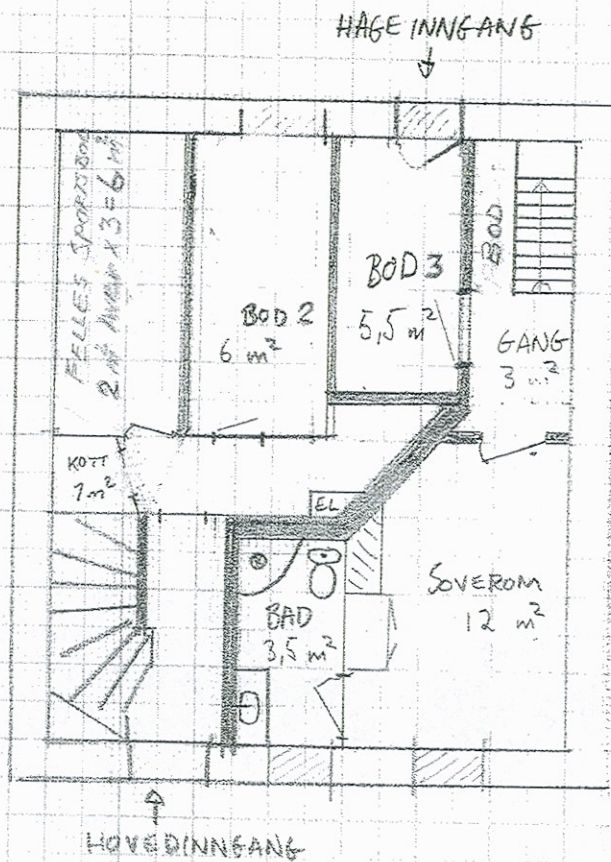
← STEMMEVÆGEN 12 →



← STEMMEVEIEN 12 →



Fasade nordvest



STEMMEVEIEN

KJELLER : 18,5 m² BOA

MÅLESTOKK 1:100

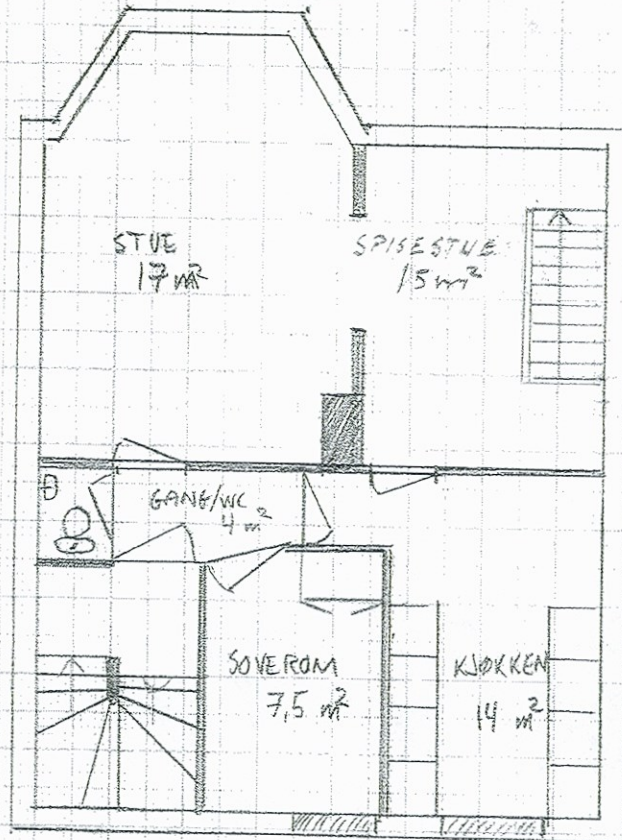
TAKHØYDE 2,21 m

STEMMEVEIEN

1. ETASJE: 57,5 m² BOA

MÅLESTOKK 1:100

TAKHØYDE 2,70 m.

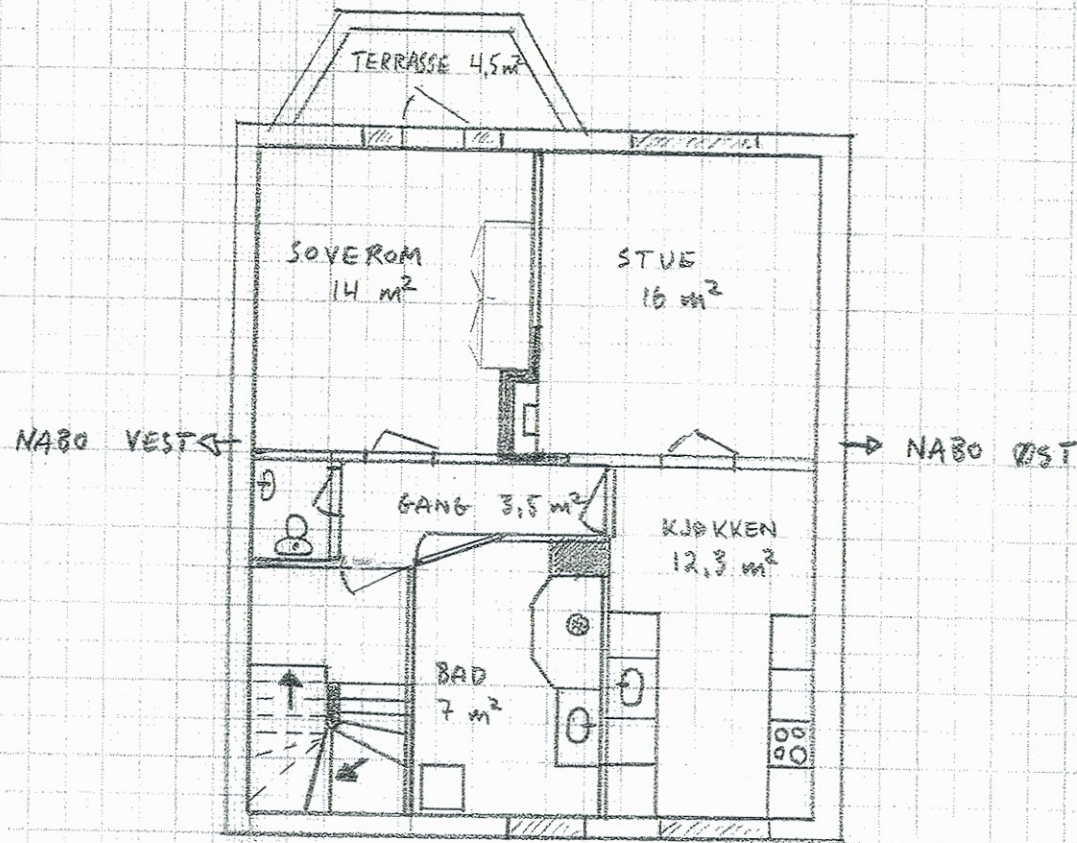


STEMMEVEIEN

2. ETASJE: 53,8 m² BOA

MÅLESTOKK 1:100

TAKHØYDE 2,88 m.

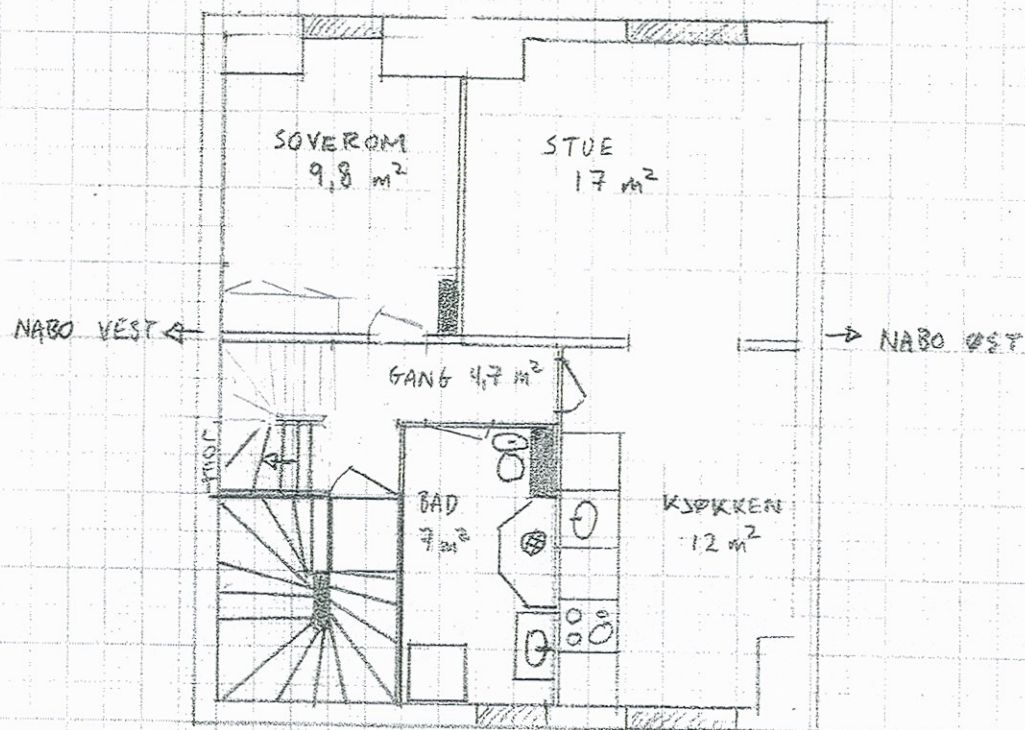


STEMMEVEIEN

3. ETASJE: 52,5 m² BOA

MÅLESTOKK 1:100

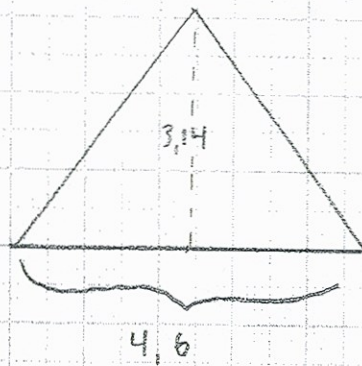
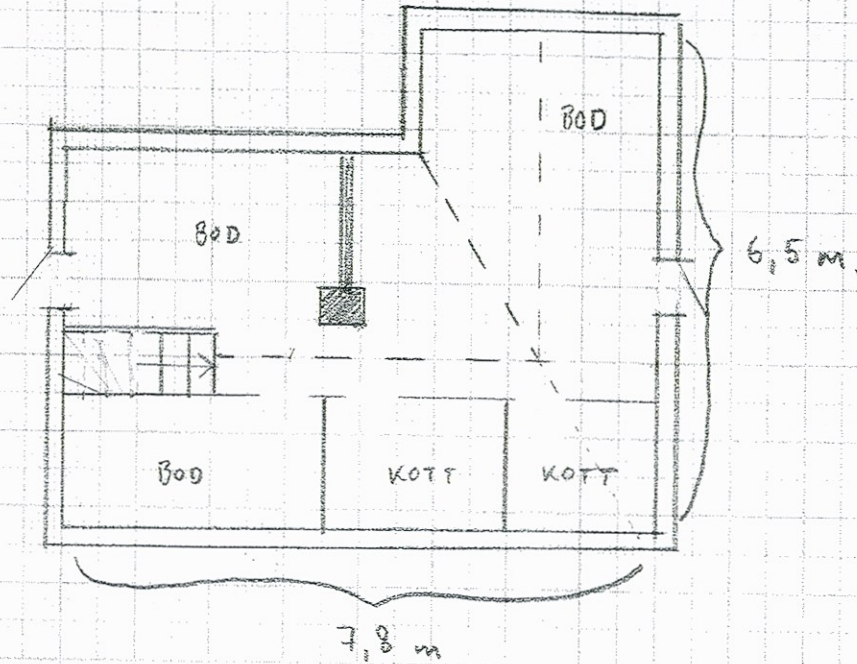
TAKHØYDE 2,75 m.



STEMMEVEIEN

LOFT

MÅLESTOKK 1:100



TVERRSNITT